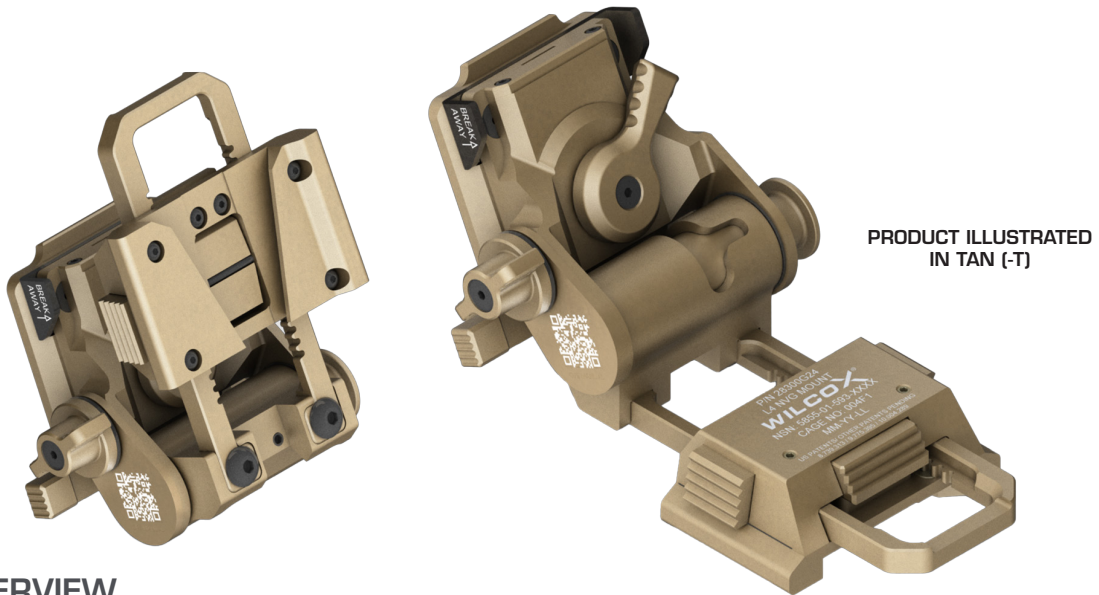


## TECHNICAL DATA SHEET

# G24 BREAKAWAY NIGHT VISION GOGGLE MOUNT



### PRODUCT OVERVIEW

The Wilcox G24® low profile breakaway mount has become the industry standard for NVG mounting solutions. With a Dovetail shoe interface, the G24 offers near universal mounting compatibility. During the G24's initial development, extensive operational input was considered and since its initial fielding, millions of operational hours have established Operator muscle memory. Pioneering the "breakaway" feature, safety is built into this mount's design. Under stress, the mount will break away from the base, reducing the potential for neck injury. This mount can be summarized in one word – quality. With superior finish, attention to design, and functionality, the G24 optimizes the use of your NVG.

### NVG COMPATIBILITY

– AN/PVS-15, AN/PVS-18, AN/PVS-31/BNVD,  
GPNVG-18 (Dovetail), AN/PSQ-36 FGS (Dovetail)

*\*Other NVG/thermal devices are compatible but require additional accessories. Please call [customer service](#) for more information.*

### FEATURES AND BENEFITS

- Maintains a very low profile on the helmet
- Ergonomic adjustments allow for one-handed operation
- Breakaway feature reduces the risk of neck injury
- Dovetail shoe interface securely locks NVGs into place
- Compatible with all Wilcox shrouds
- 5 Year Standard Limited Warranty

### SPECIFICATIONS

Dimensions: 9.9 cm L x 6.6 cm W x 6.1 cm H  
(3.9" L x 2.6" W x 2.4" H)  
Weight: 162 g (5.7 oz)  
Vertical Height Adjustment: 0.90"  
Fore/Aft Travel: >1.3"

Available Colors:  -T  -B

PRODUCT DESCRIPTION	NSN NUMBER	PART NUMBER
G24 MOUNT	5855-01-593-6422 [B] 5855-01-593-6375 [T]	28300G24
G24 BREAKAWAY BASE/MAGNET/ ONE HOLE SHROUD STANDARD/LANYARD		28300G37
G24 BREAKAWAY BASE/MAGNET/ THREE HOLE SHROUD STANDARD/LANYARD/CUP		28300G70
G24 BREAKAWAY BASE/MAGNET/ THREE HOLE SHROUD HYBRID/LANYARD/CUP		56100G41